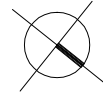


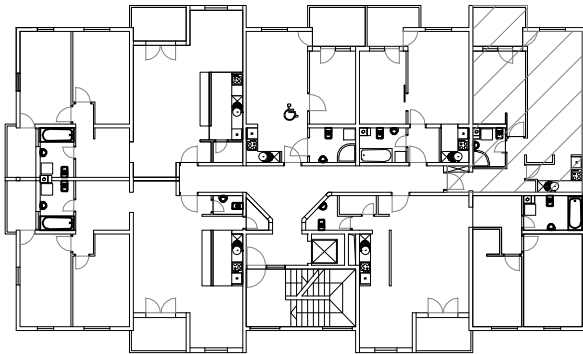
STAN 10. - 2. KAT MJ 1:100



| STAN 10 | |
|---------|--|
| 10.1 | HODNIK ker.pl. =7,53m ² |
| 10.2 | DN. BORAVAK I BLAG parket =20,40m ² |
| 10.3 | KUHINJA ker.pl. =4,68m ² |
| 10.4 | SOBA parket =11,85m ² |
| 10.5 | KUPAONICA ker.pl. =3,44m ² |
| 10.6 | LOGGIA ker.pl. =5,84(75%=4,38)m ² |
| S10 | UKUPNO=52,28 m ² |

PRIPADCI:
 - Ostava 010 u podrumu 2,16m²
 - Garaža ili garažno mjesto u podrumu
 (po izboru)

TLOCRT 2. KATA



JUGOZAPADNO PROČELJE

