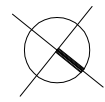
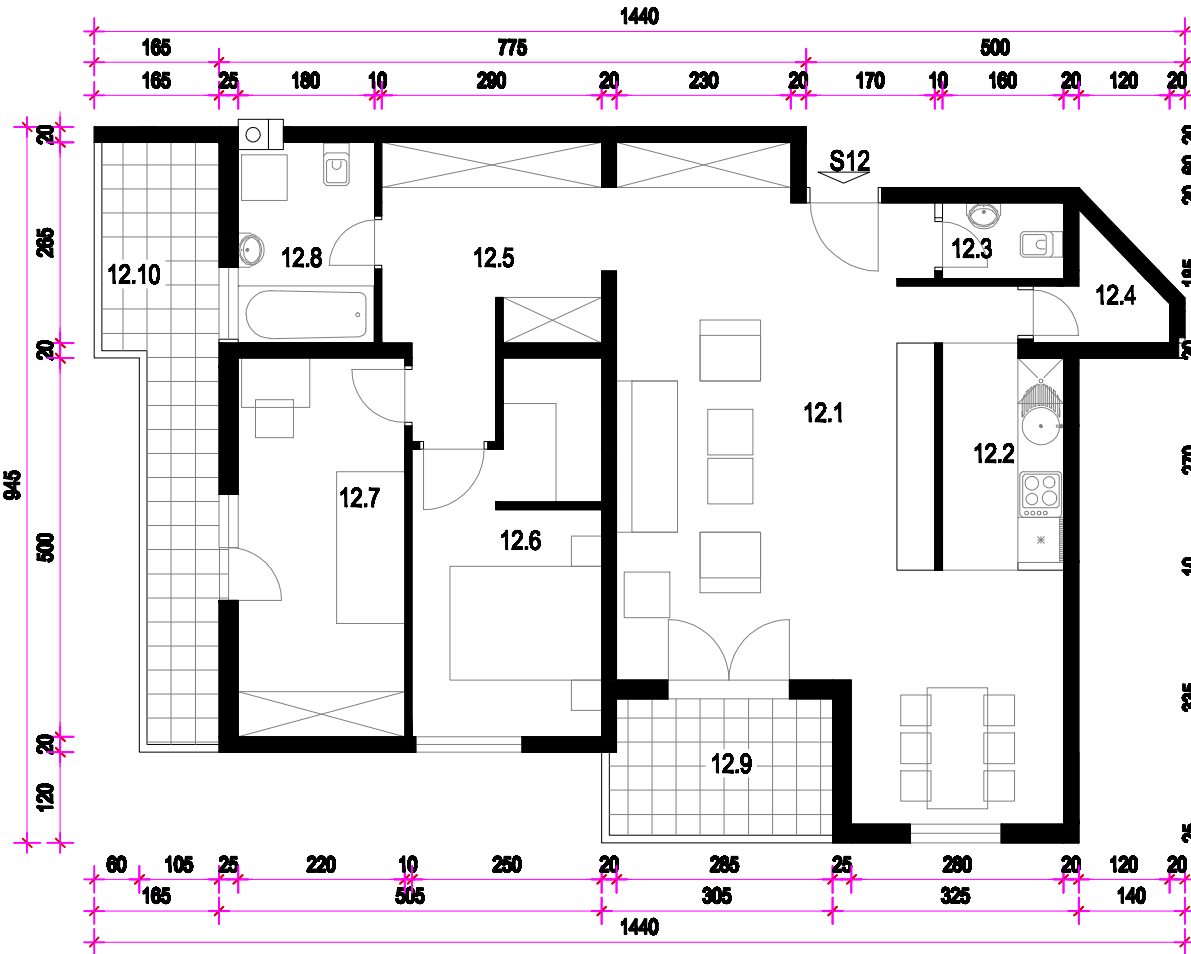


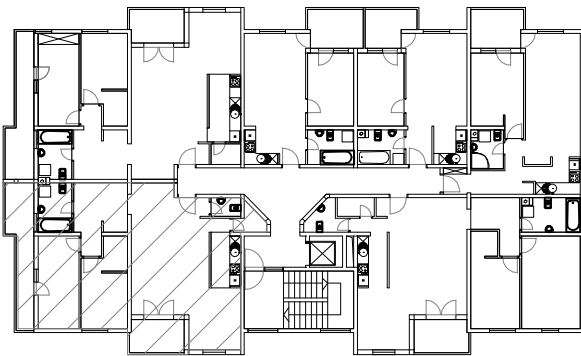
STAN 12. - 3. KAT MJ 1:100



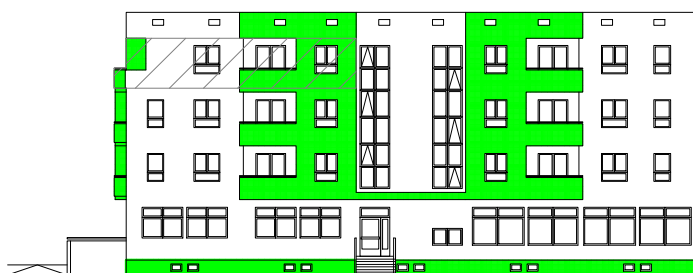
STAN 12	
12.1	DN. BORAVAKI BLAG. perlat =37,81m ²
12.2	KUHINJA kar. pl. =4,82m ²
12.3	WC kar. pl. =1,60m ²
12.4	IZBA kar. pl. =1,37m ²
12.5	DEGAŽMAN perlat =8,08m ²
12.6	SOBA perlat =10,82m ²
12.7	SOBA perlat =11,00m ²
12.8	KUPAONICA kar. pl. =4,71m ²
12.9	LOGGIA kar. pl. =5,24(75%)=3,93m ²
12.10	TERASA kar. pl. =8,20(90%)=4,80m ²
S12	UKUPNO =88,41m ²

PRIPADCI:
 - Ostava 012 u podrumu 2,71m²
 - Garaža ili garažno mjesto u podrumu (po izboru)

TLOCRT 3. KATA



SJEVEROISTOČNO PROČELJE



JUGOISTOČNO PROČELJE

