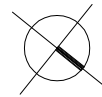


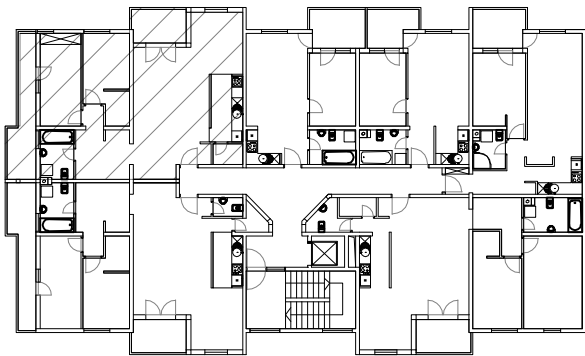
STAN 13. - 3. KAT MJ 1:100



STAN 13	
13.1	DN. BORAVAK I BLAG. parket =38,06m ²
13.2	KUHINJA kar. pl. =6,22m ²
13.3	IZBA kar. pl. =1,78m ²
13.4	DEGAŽMAN parket =9,03m ²
13.5	SOBA parket =10,92m ²
13.6	SOBA parket =11,00m ²
13.7	KUPAONICA kar. pl. =4,71m ²
13.8	LOGGIA kar. pl. =6,24(75%-8,99)m ²
13.9	TERASA kar. pl. =9,20(60%-1,00)m ²
S13	UKUPNO=88,22 m ²

PRIPADCI:
 - Ostava 014 u podrumu 14,45m²
 - Garaža ili garažno mjesto u podrumu (po izboru)

TLOCRT 3. KATA



JUGOZAPADNO PROČELJE



JUGOISTOČNO PROČELJE

