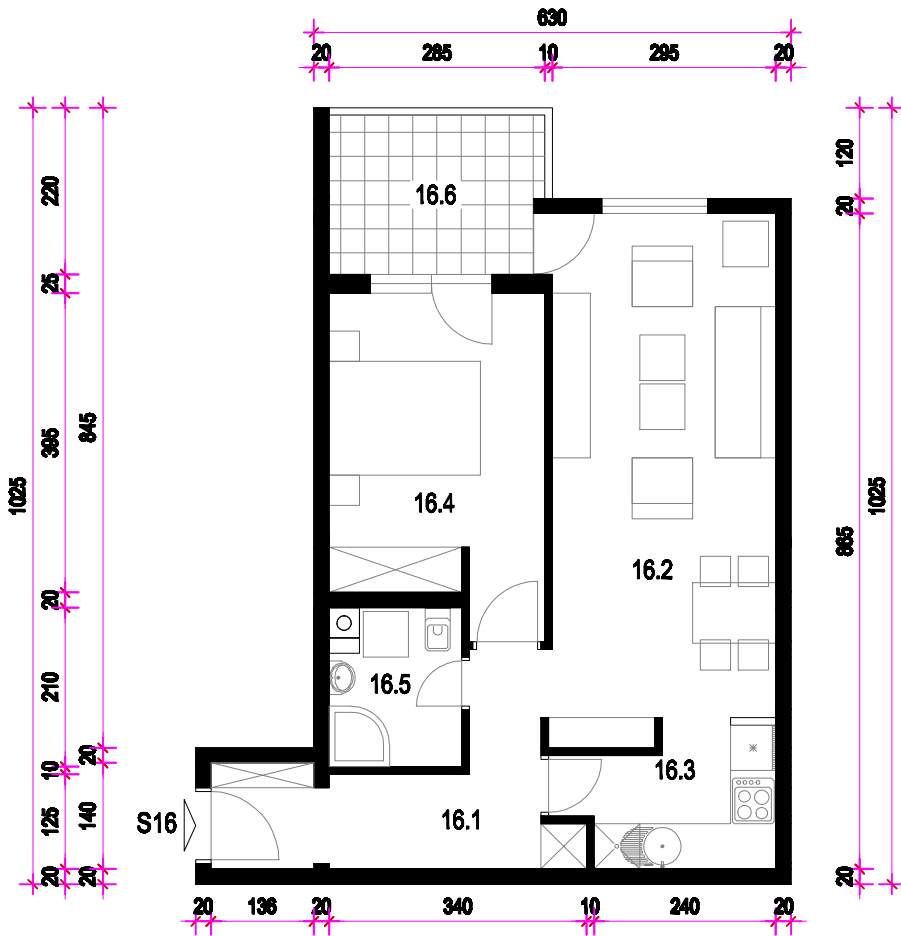


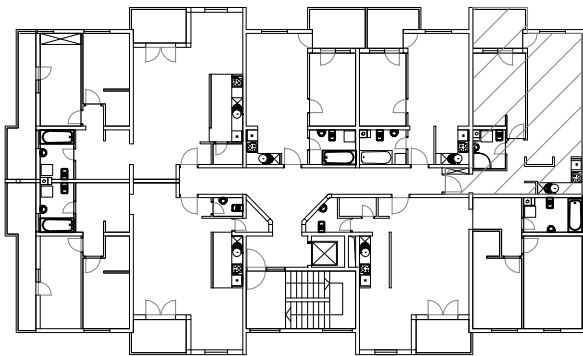
STAN 16. - 3. KAT MJ 1:100



STAN 16	
16.1	HODNIK ker.pl. =7,53m ²
16.2	DN. BORAVAK I BLAG parket =20,40m ²
16.3	KUHINJA ker.pl. =4,68m ²
16.4	SOBA parket =11,85m ²
16.5	KUPAONICA ker.pl. =3,44m ²
16.6	LOGGIA ker.pl. =5,84(75%=4,38)m ²
S16	UKUPNO =52,28m²

PRIPADCI:
 - Ostava 011 u podrumu 2,81m²
 - Garaža ili garažno mjesto u podrumu (po izboru)

TLOCRT 3. KATA



JUGOZAPADNO PROČELJE

