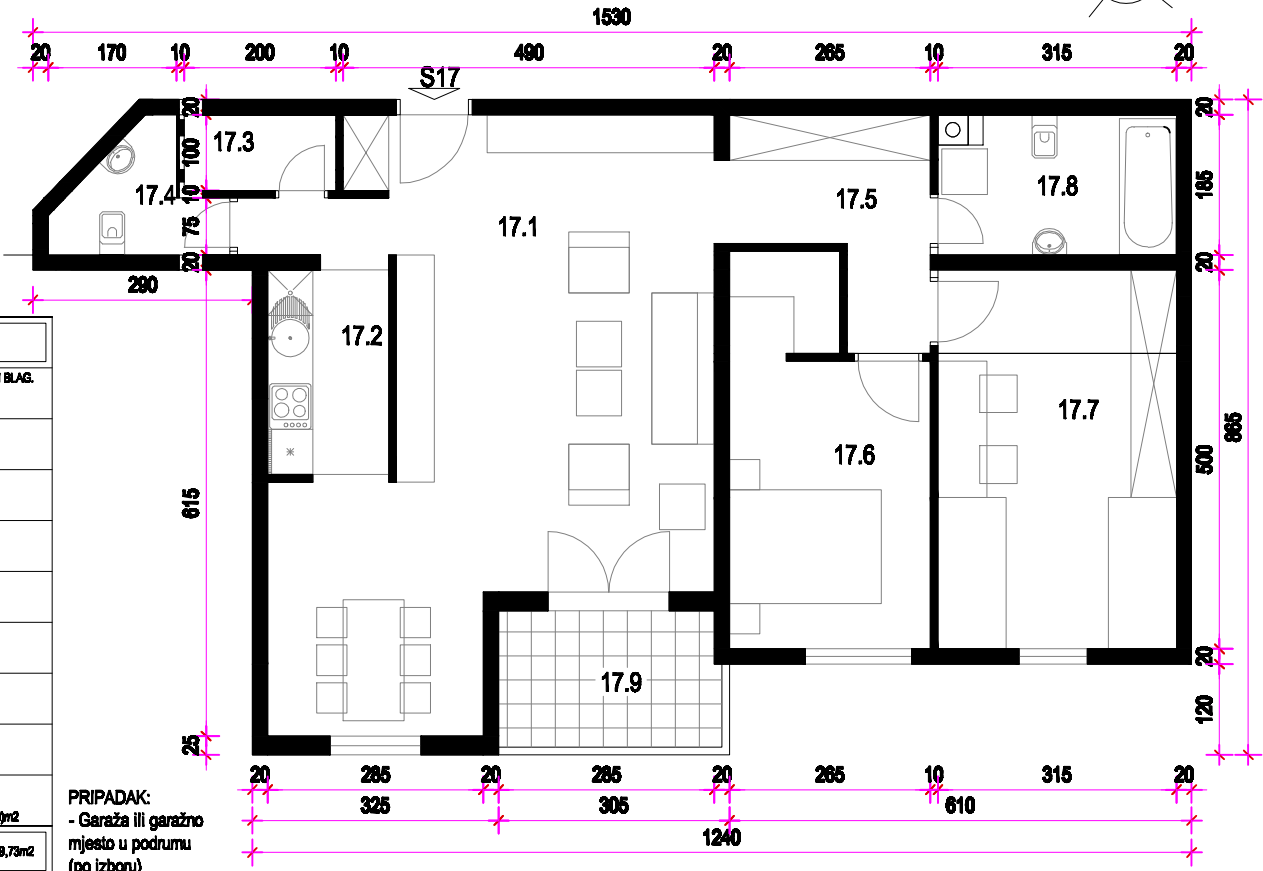


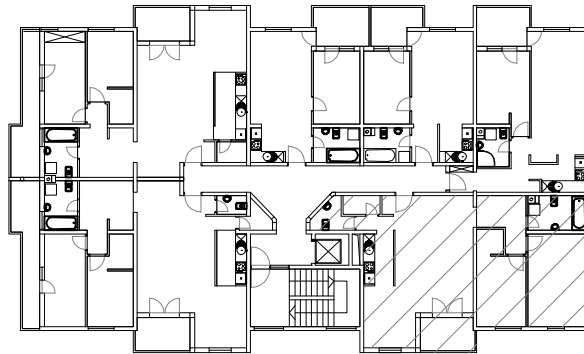
STAN 17. - 3. KAT MJ 1:100



STAN 17	
17.1	DN. BORAVAKI BLAG. parket =35,43m ²
17.2	KUHINJA ker. pl. =6,00m ²
17.3	IZBA ker. pl. =2,00m ²
17.4	WC ker. pl. =2,81m ²
17.5	DEGAŽMAN parket =6,10m ²
17.6	SOBA parket =12,10m ²
17.7	SOBA parket =15,73m ²
17.8	KUPAONICA ker. pl. =6,59m ²
17.9	LOGGIA ker. pl. =8,24(78%)=3,83m ²
S17	UKUPNO =88,73m ²

PRIPADAK:
- Garaža ili garažno
mjesto u podrumu
(po izboru)

TLOCRT 3. KATA



SJEVEROISTOČNO PROČELJE

