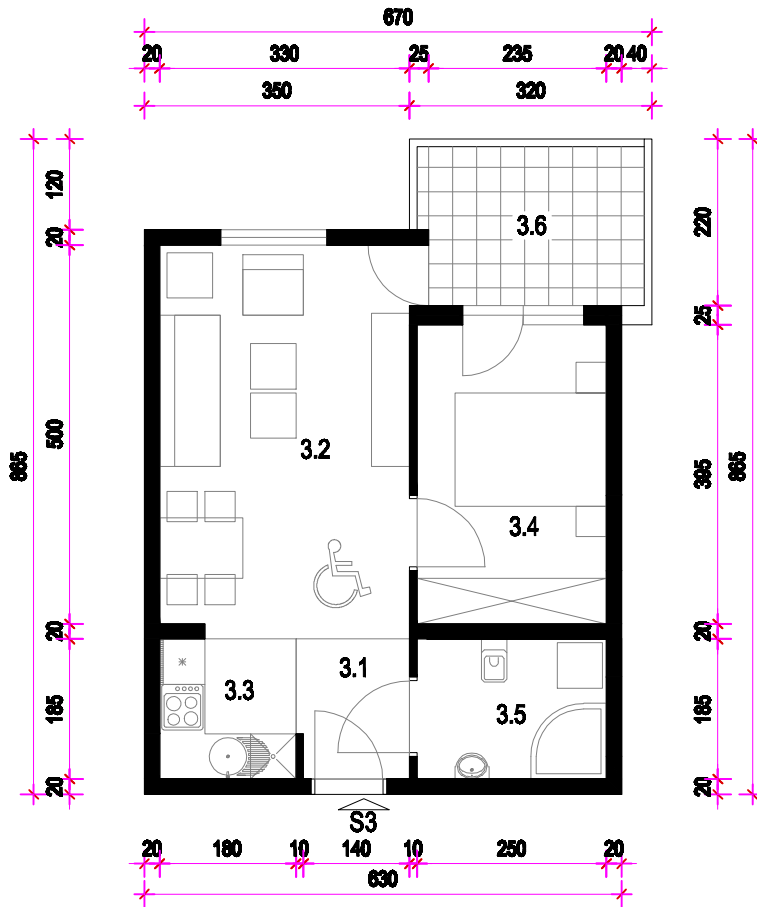


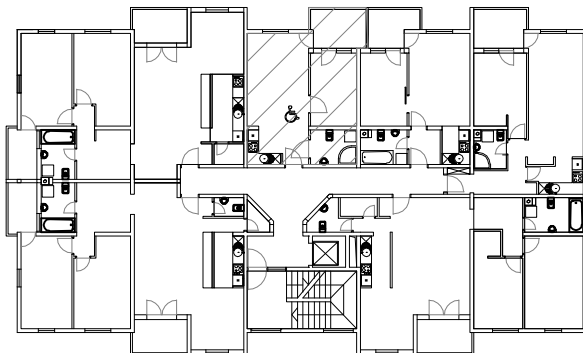
STAN 3. - 1. KAT MJ 1:100



STAN 3	
3.1	HODNIK ker.pl. =2,78m ²
3.2	DN. BORAVAKI BLAG. parket =17,04m ²
3.3	KUHINJA ker.pl. =3,33m ²
3.4	SOBA parket =9,88m ²
3.5	KUPAONICA ker.pl. =4,63m ²
3.6	LOGGIA ker.pl. =6,15(75%=4,61)m ²
S3	UKUPNO =42,27m ²

PRIPADCI:
 - Ostava 01 u podrumu 2,16m²
 - Parkiralište P1 u dvorištu 12,1m²

TLOCRT 1. KATA



JUGOZAPADNO PROČELJE

