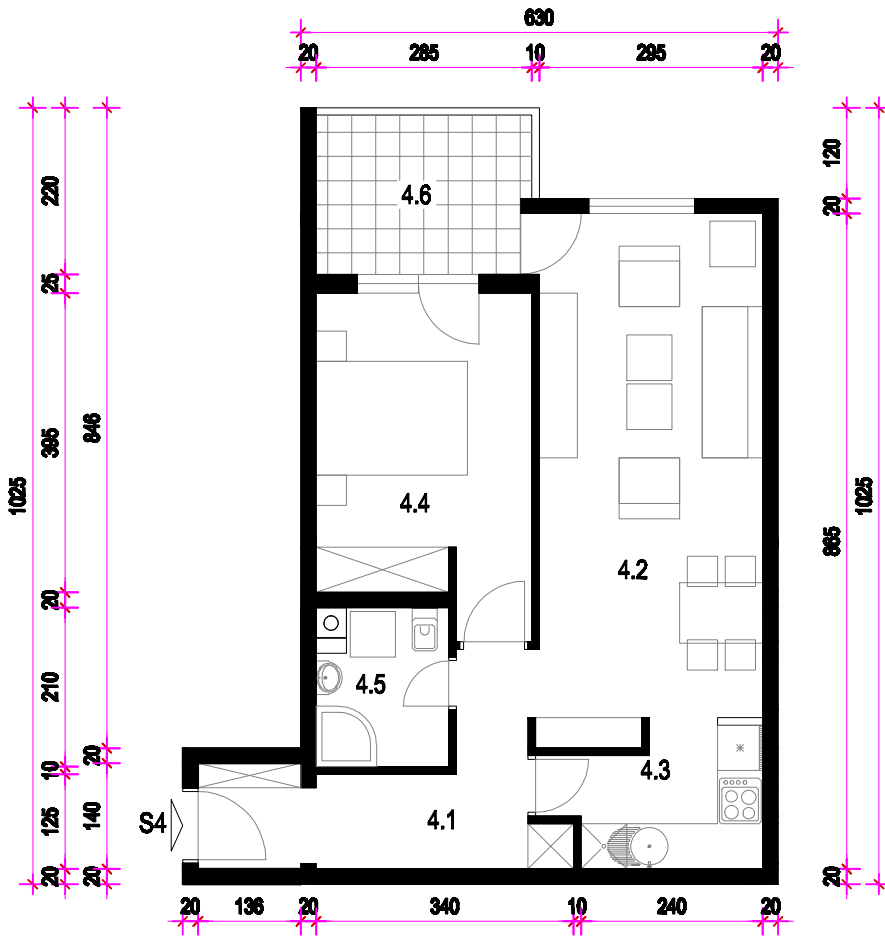
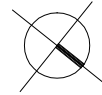


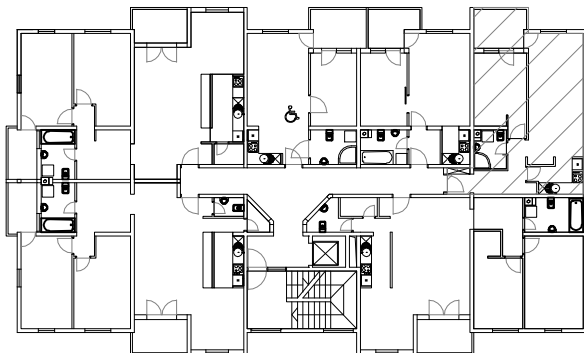
# STAN 4. - 1. KAT MJ 1:100



STAN 4	
4.1	HODNIK ker.pl. =7,53m <sup>2</sup>
4.2	DN. BORAVAK I BLAG parket =20,40m <sup>2</sup>
4.3	KUHINJA ker.pl. =4,68m <sup>2</sup>
4.4	SOBA parket =11,85m <sup>2</sup>
4.5	KUPAONICA ker.pl. =3,44m <sup>2</sup>
4.6	LOGGIA ker.pl. =5,84(75%=4,38)m <sup>2</sup>
S4	UKUPNO =52,28m <sup>2</sup>

PRIPADCI:  
 - Ostava 02 u podrumu 2,07m<sup>2</sup>  
 - Garaža ili garažno mjesto u podrumu (po izboru)

## TLOCRT 1. KATA



## JUGOZAPADNO PROČELJE

