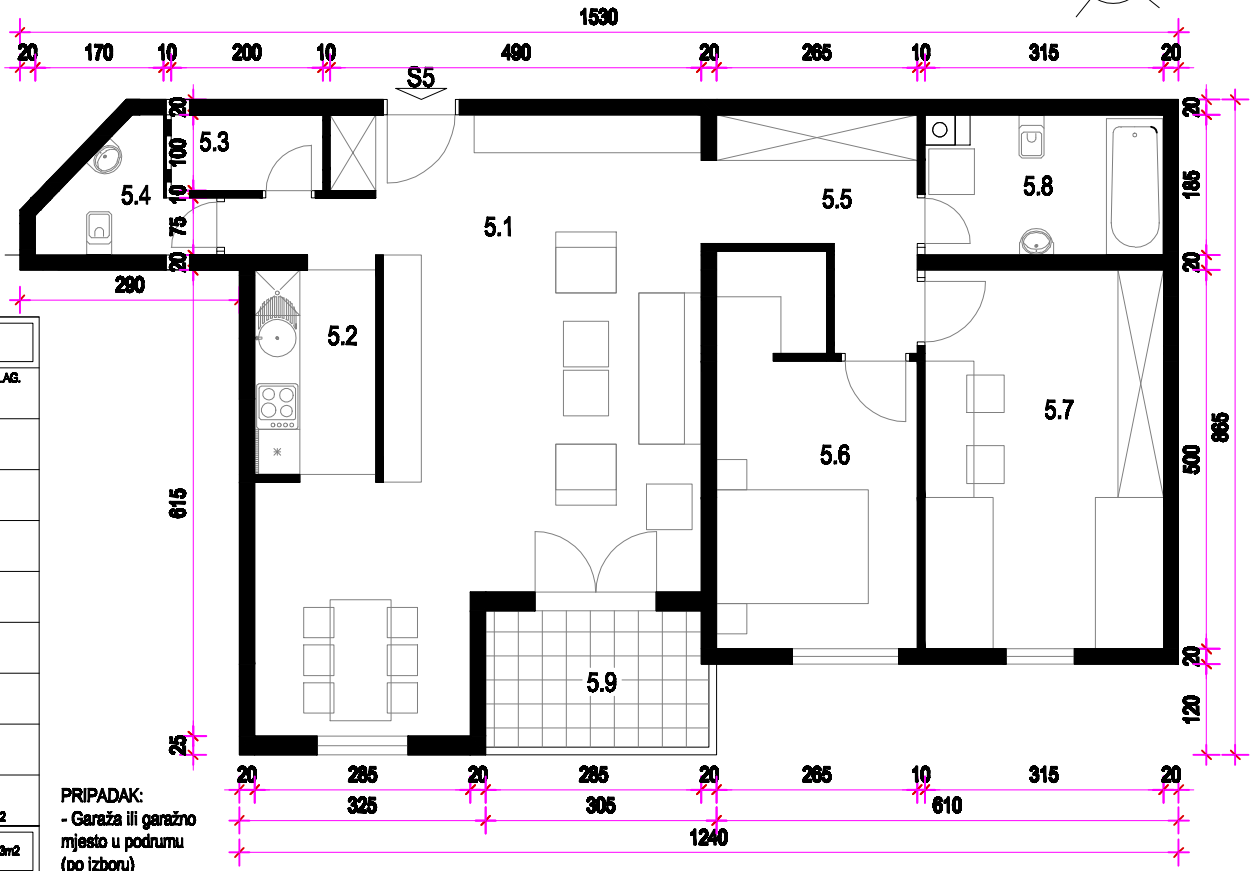


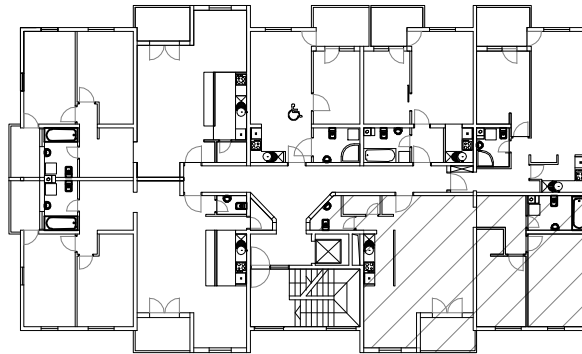
STAN 5. - 1. KAT MJ 1:100



| STAN 5 | |
|--------|--|
| 5.1 | DN. BORAVAKI BLAG. parket =35,49m ² |
| 5.2 | KUHINJA ker. pl. =6,00m ² |
| 5.3 | IZBA ker. pl. =2,00m ² |
| 5.4 | WC ker. pl. =2,81m ² |
| 5.5 | DEGAŽMAN parket =6,10m ² |
| 5.6 | SOBA parket =12,10m ² |
| 5.7 | SOBA parket =15,73m ² |
| 5.8 | KUPAONICA ker. pl. =6,59m ² |
| 5.9 | LOGGIA ker. pl. =8,24(78%)=3,53m ² |
| S5 | UKUPNO =69,72m ² |

PRIPADAK:
- Garaža ili garažno
mjesto u podrumu
(po izboru)

TLOCRT 1. KATA



SJEVEROISTOČNO PROČELJE

