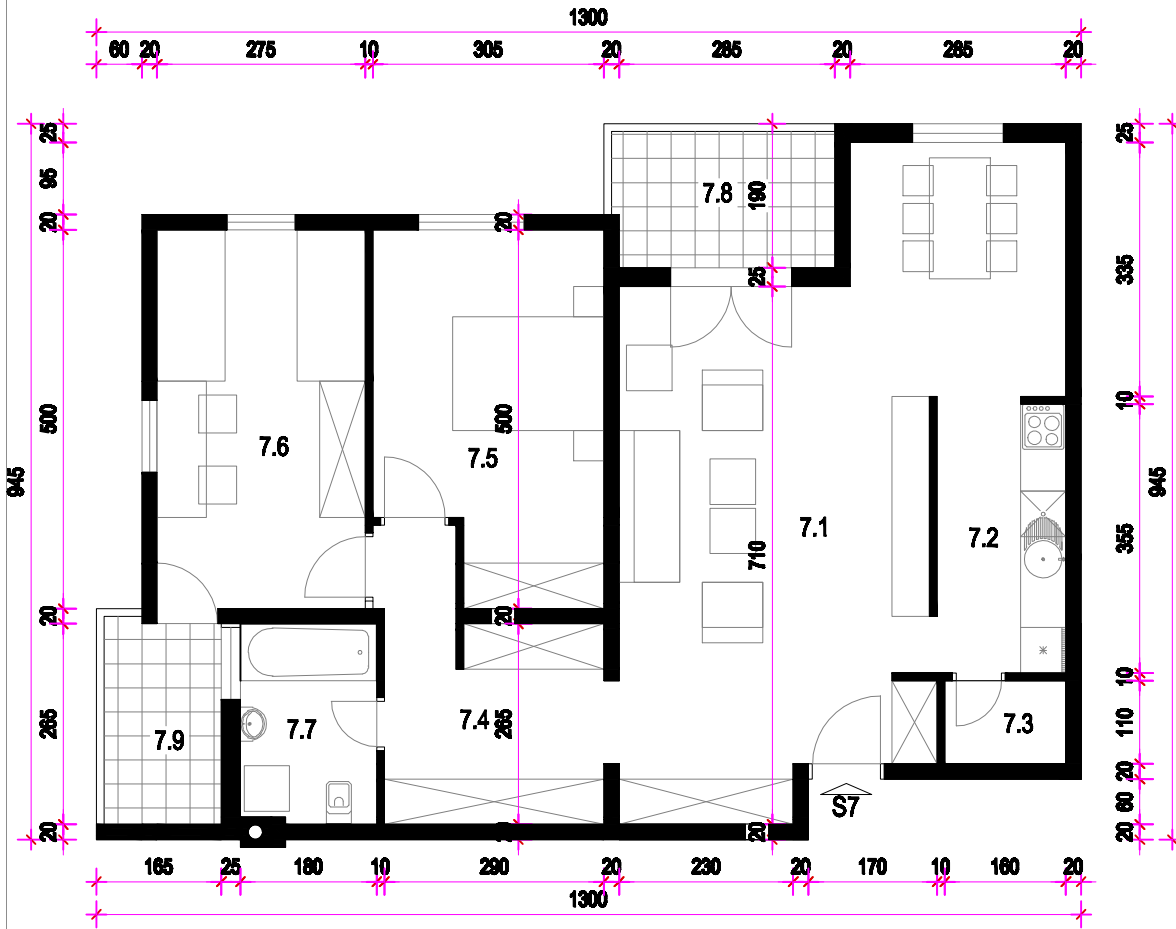


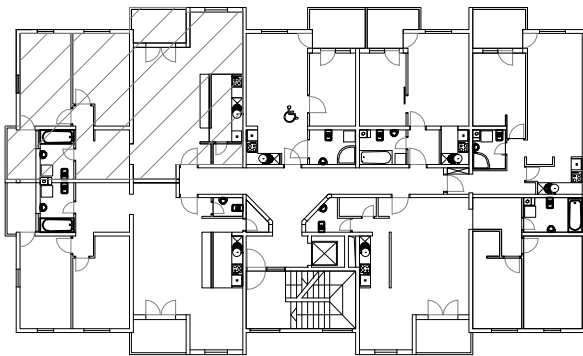
# STAN 7. - 2. KAT MJ 1:100



STAN 7	
7.1	DN. BORAVAK I BLAG. parket =36,06m <sup>2</sup>
7.2	KUHINJA kar. pl. =6,22m <sup>2</sup>
7.3	IZBA kar. pl. =1,78m <sup>2</sup>
7.4	DEGAŽMAN parket =9,03m <sup>2</sup>
7.5	SOBA parket =13,81m <sup>2</sup>
7.6	SOBA parket =13,75m <sup>2</sup>
7.7	KUPAONICA kar. pl. =4,71m <sup>2</sup>
7.8	LOGGIA kar. pl. =5,24(75%-6,93)m <sup>2</sup>
7.9	LOGGIA kar. pl. =4,18(75%-5,12)m <sup>2</sup>
S7	UKUPNO =82,38m <sup>2</sup>

PRIPADAK:  
- Garaža ili garažno  
mjesto u podrumu  
(po izboru)

TLOCRT 2. KATA



JUGOZAPADNO PROČELJE



JUGOISTOČNO PROČELJE

