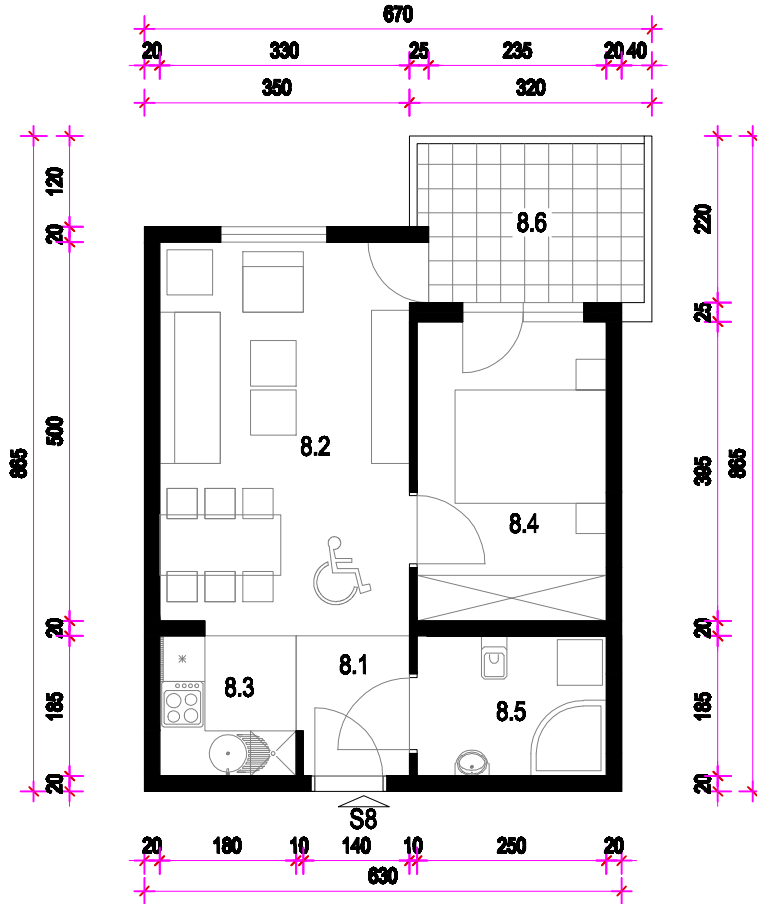


STAN 8. - 2. KAT MJ 1:100

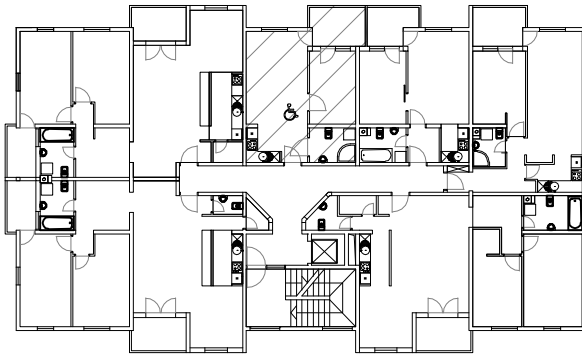


STAN 8	
8.1	HODNIK ker.pl. =2,78m ²
8.2	DN. BORAVAK I BLAG. parket =17,04m ²
8.3	KUHINJA ker.pl. =3,33m ²
8.4	SOBA parket =9,88m ²
8.5	KUPAONICA ker.pl. =4,63m ²
8.6	LOGGIA ker.pl. =6,15(75%=4,61)m ²
S8	UKUPNO =42,27m ²

PRIPADCI:

- Ostava 03 u podrumu 2,07m²
- Parkiralište u dvorištu P2 12,10m²

TLOCRT 2. KATA



JUGOZAPADNO PROČELJE

