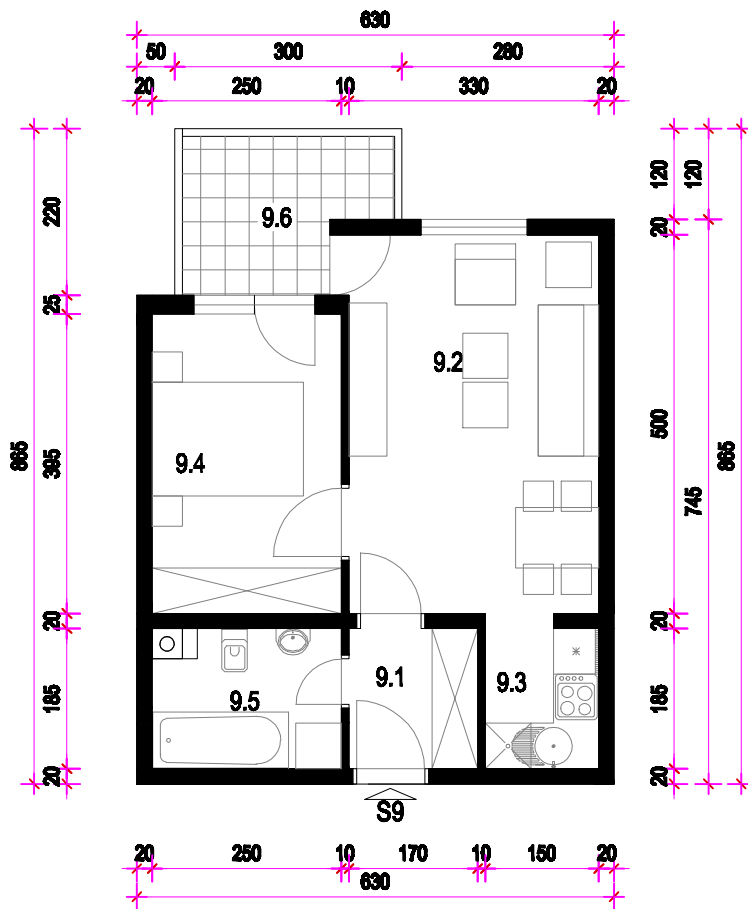


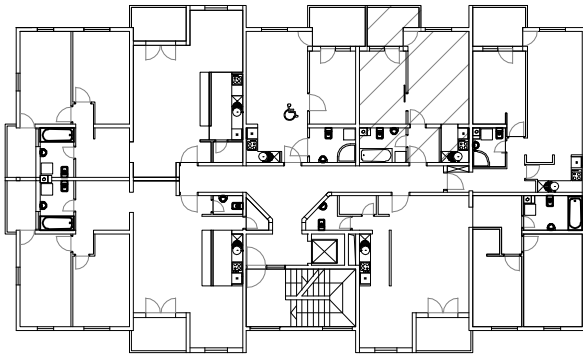
STAN 9. - 2. KAT MJ 1:100



STAN 9	
9.1	HODNIK ker.pl. =3,15m ²
9.2	DN. BORAVAK I BLAG. parket =16,50m ²
9.3	KUHINJA ker.pl. =2,96m ²
9.4	SOBA parket =9,88m ²
9.5	KUPAONICA ker.pl. =4,39m ²
9.6	LOGGIA ker.pl. =5,03(75%=3,77)m ²
S9	UKUPNO =40,65m ²

PRIPADCI:
 - Ostava 04 u podrumu 2,16m²
 - Parkiralište u dvorištu P13 12,0m²

TLOCRT 2. KATA



JUGOZAPADNO PROČELJE

