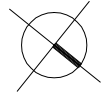
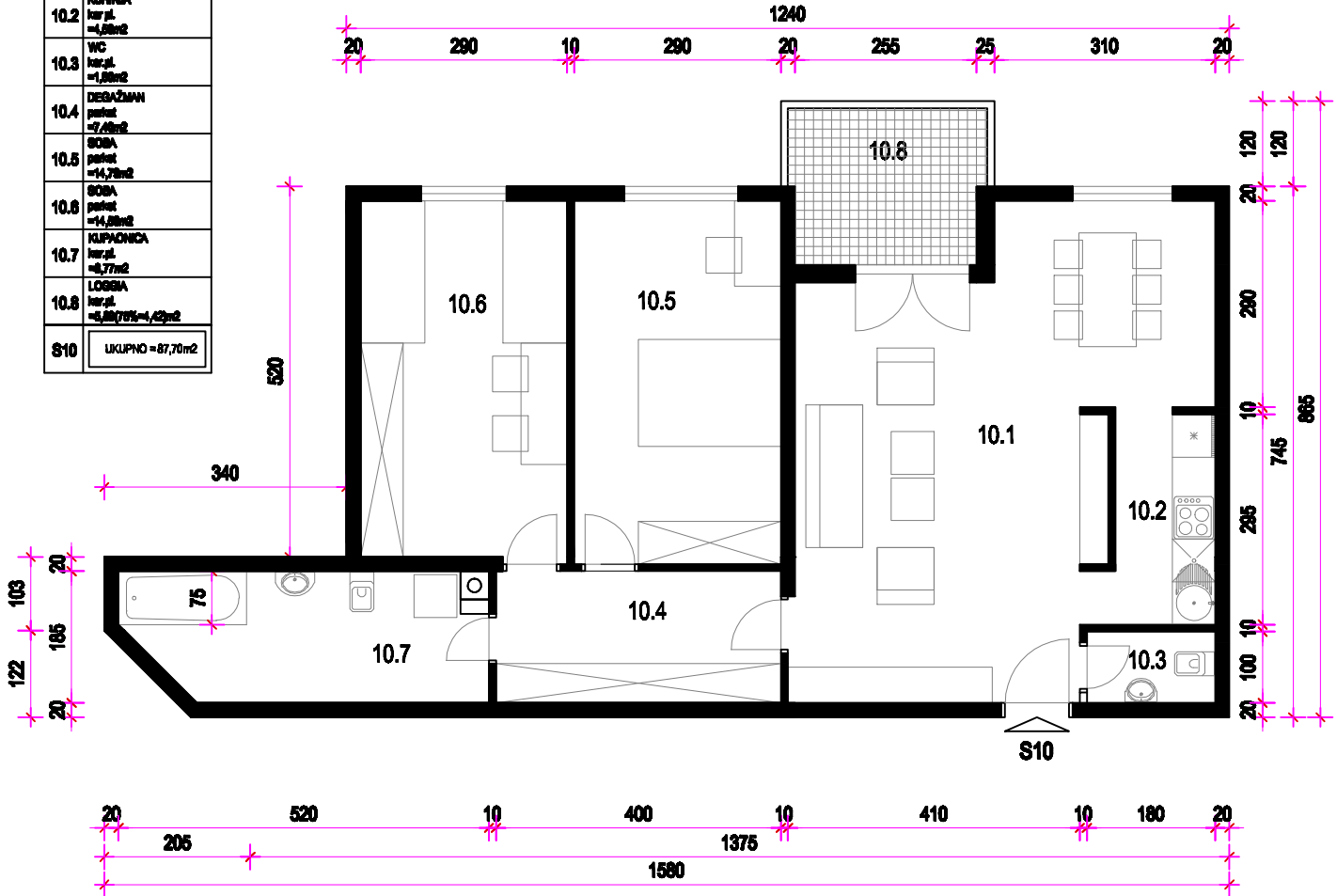


# STAN 10. - 1. KAT MJ 1:100



STAN 10	
10.1	DL. BORAVAK I BLAB. površ. = 91,43m <sup>2</sup>
10.2	KUHINJA kor. pl. = 4,68m <sup>2</sup>
10.3	WC kor. pl. = 1,88m <sup>2</sup>
10.4	DEGAZMAN površ. = 7,49m <sup>2</sup>
10.5	SOBA površ. = 14,78m <sup>2</sup>
10.6	SOBA površ. = 14,89m <sup>2</sup>
10.7	KUPAONICA kor. pl. = 8,77m <sup>2</sup>
10.8	LOGGA kor. pl. = 5,88 (79%) = 4,23m <sup>2</sup>
S10	LUKUPNO = 87,70m <sup>2</sup>

PRIPADCI:  
 - Ostava 09 u podrumu 2,75m<sup>2</sup>  
 - Garaža ili garažno mjesto u podrumu (po izboru)



## TLOCRT 1. KATA

