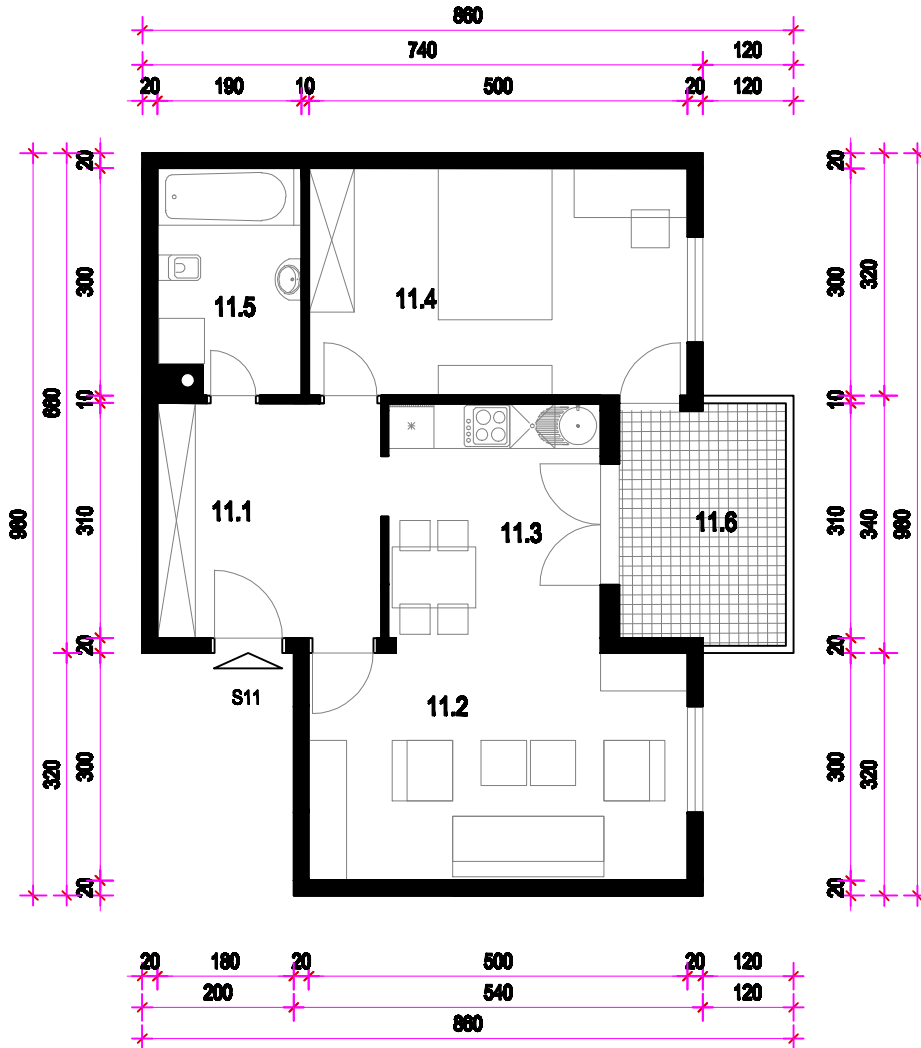
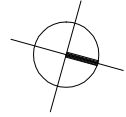


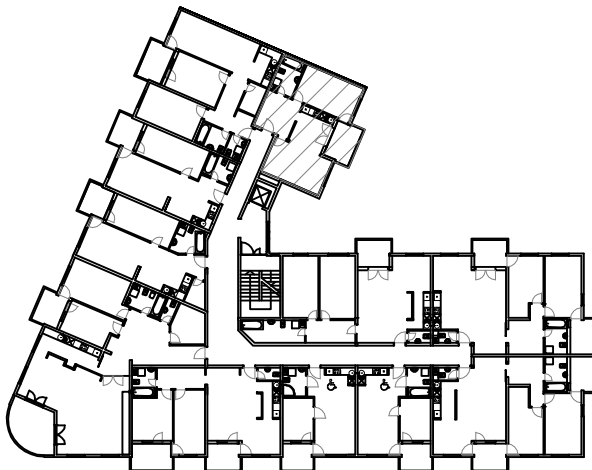
STAN 11.- 2. KAT MJ 1:100



STAN 11	
11.1	HODNIK ker.pl. =8,16m ²
11.2	DN. BORAVAK parosk =15,15m ²
11.3	KUHINJA I BLAG. ker.pl. =8,30m ²
11.4	SOBA parosk =15,00m ²
11.5	KUPAONICA ker.pl. =5,16m ²
11.6	LOGGIA ker.pl. =6,82(75%=5,12)m ²
S11	UKUPNO =58,88m ²

PRIPADAK:
- Garaža ili garažno
mjesto u podrumu
(po izboru)

TLOCRT 2. KATA



JUGOZAPADNO PROČELJE

