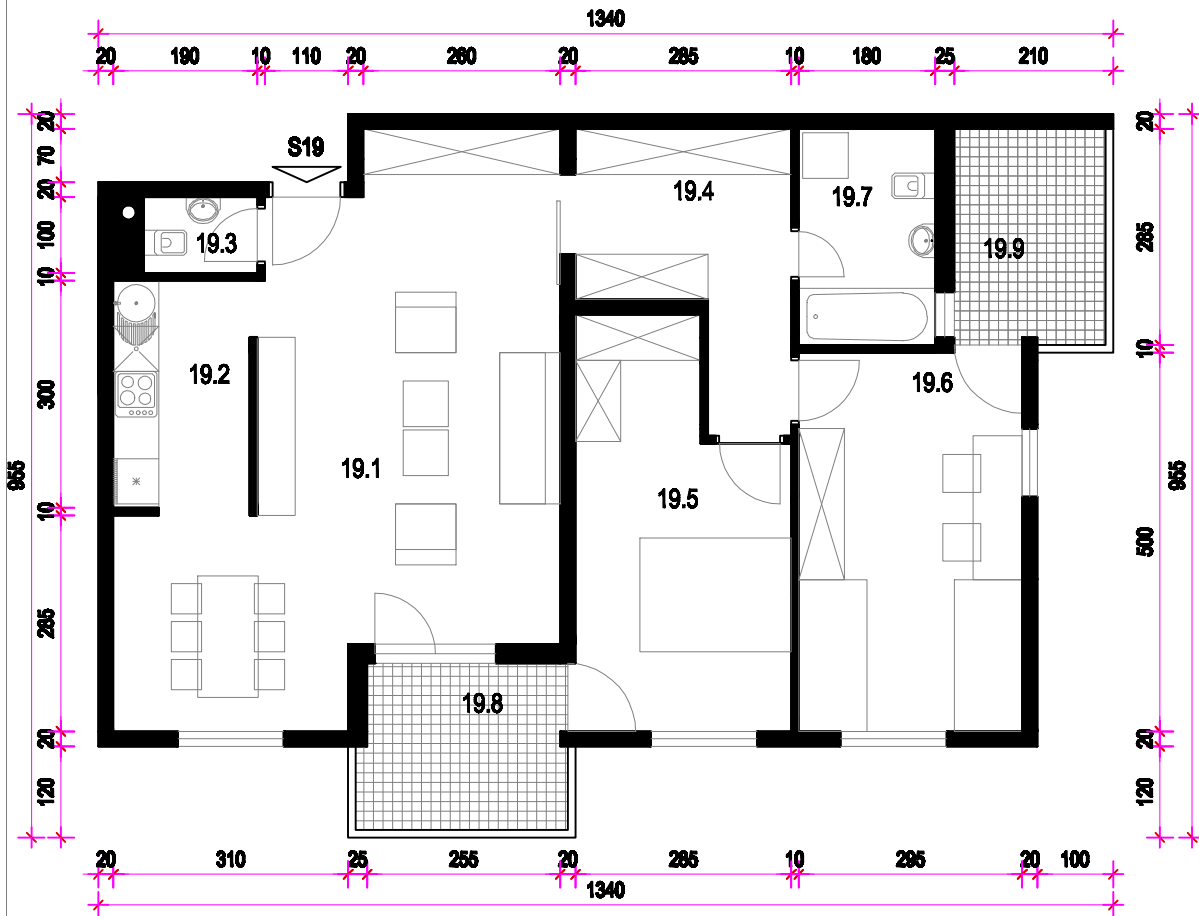
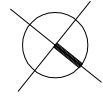


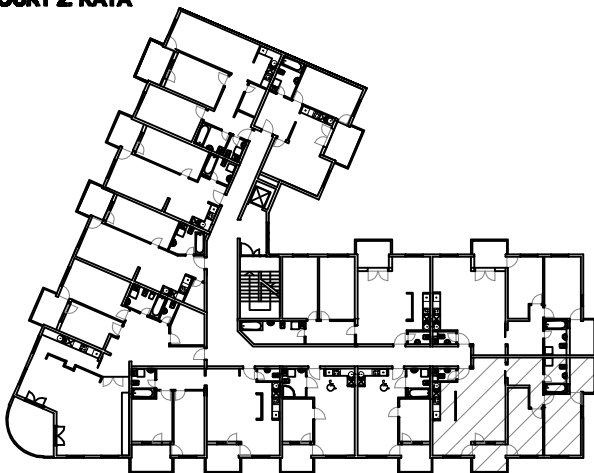
# STAN 19. - 2. KAT MJ 1:100



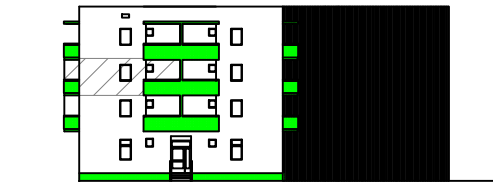
STAN 19	
19.1	DN. BORAVAKI BLAG. podst. =12,70m <sup>2</sup>
19.2	KUHINJA kor.pl. =5,40m <sup>2</sup>
19.3	WC kor.pl. =1,80m <sup>2</sup>
19.4	DEBAŽMANI podst. =6,40m <sup>2</sup>
19.5	SOBA podst. =13,84m <sup>2</sup>
19.6	SOBA podst. =14,70m <sup>2</sup>
19.7	KUPAONICA kor.pl. =5,10m <sup>2</sup>
19.8	LOGGA kor.pl. =5,80(70%)=4,06m <sup>2</sup>
19.9	LOGGA kor.pl. =5,80(70%)=4,06m <sup>2</sup>
S19	UKUPNO=60,19 m <sup>2</sup>

**PRIPADAK:**  
- Garaža se spremištam u podrumu (po izboru)

## TLOCRT 2 KATA



## JUGOZAPADNO PROČELJE



## SJEVEROZAPADNO PROČELJE

