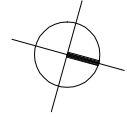


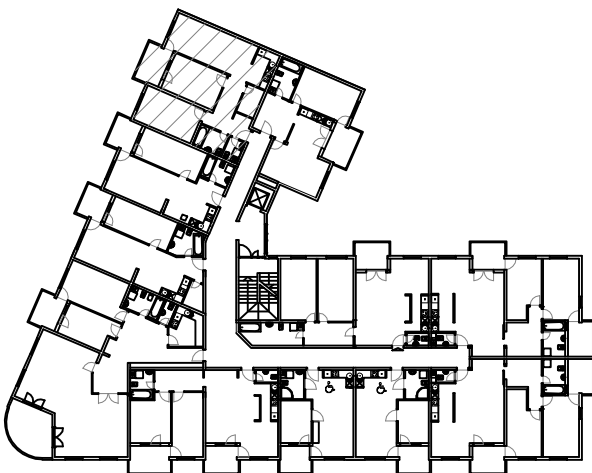
STAN 2 - 1. KAT MJ 1:100



STAN 2	
2.1	HODNIK ker.pl. =10,94m ²
2.2	DN. BORAVAK I BLAG. parket =21,00m ²
2.3	KUHINJA ker.pl. =5,50m ²
2.4	SOBA parket =14,10m ²
2.5	SOBA parket =15,00m ²
2.6	KUPAONICA ker. pl. =4,41m ²
2.7	WC ker.pl. =2,19m ²
2.8	SPREMIŠTE ker.pl. =3,60m ²
2.9	LOGGIA ker. pl. =6,52 (75%=4,89)m ²
S2	UKUPNO =61,53m ²

PRIPADAK:
-Garaža ili garažno
mjesto u podrumu
(po izboru)

TLOCRT 1. KATA



SJEVEROISTOČNO PROČELJE

