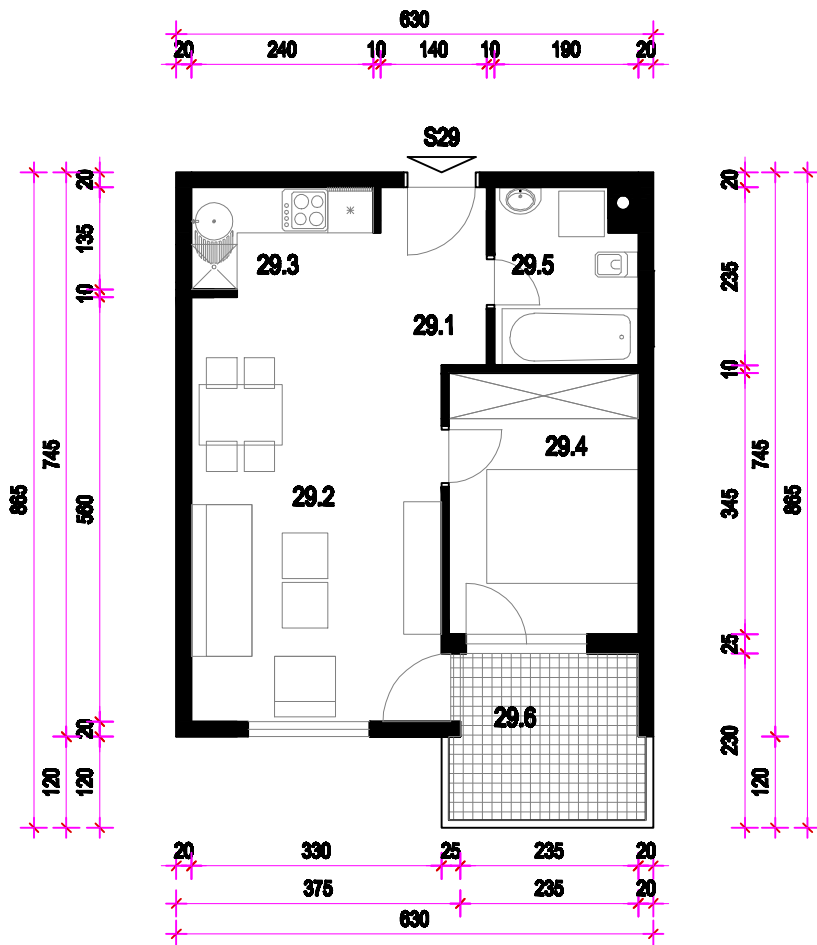
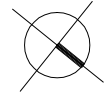


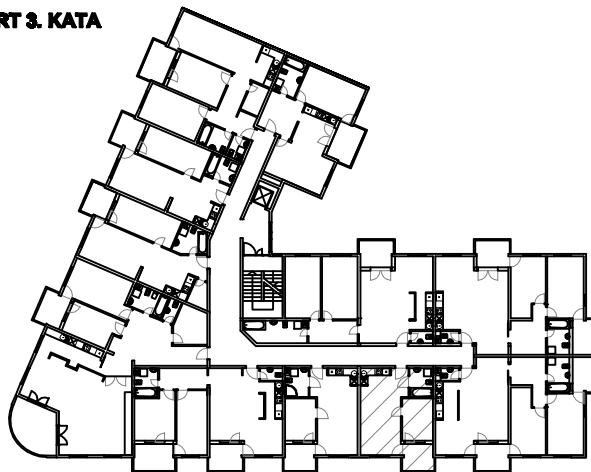
STAN 29. - 3. KAT MJ 1:100



STAN 29	
29.1	HODNIK ker.pl. =3,46m ²
29.2	DN. BORAVAK I BLAG. parket =17,80m ²
29.3	KUHINJA ker.pl. =3,24m ²
29.4	SOBA parket =8,63m ²
29.5	KUPAONICA ker.pl. =4,47m ²
29.6	TERASA ker.pl. =5,45(50%=2,73)m ²
S29	UKUPNO =40,33m ²

- PRIPADCI:
 - Ostava 08 u podrumu 2,75m²
 - Garaža ili garažno mjesto u podrumu (po izboru)

TLOCRT 3. KATA



SJEVEROZAPADNO PROČELJE

