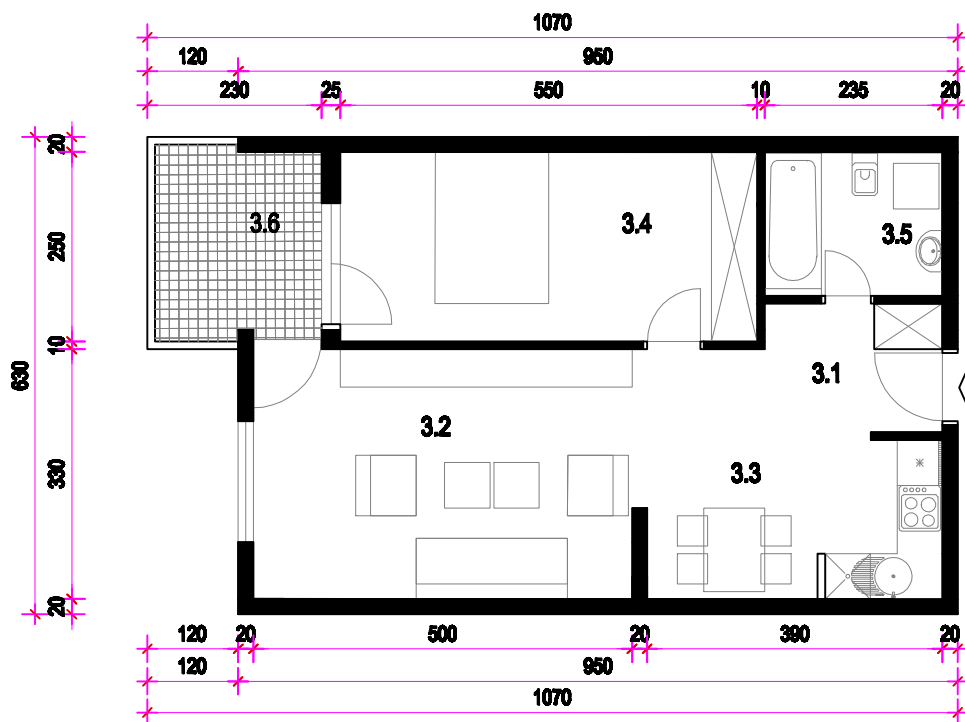
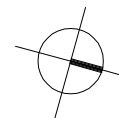


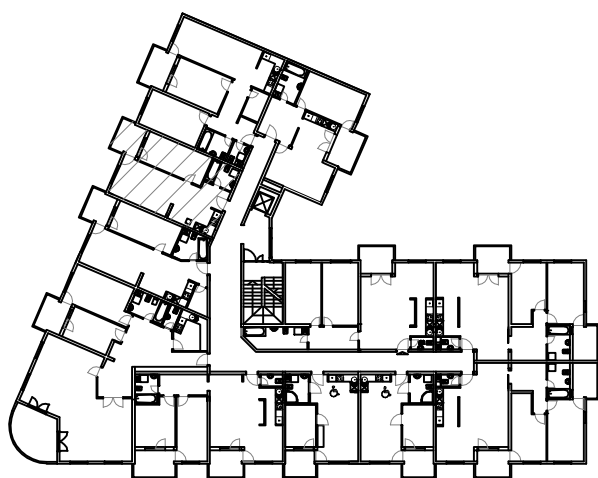
# STAN 3. - 1. KAT MJ 1:100



STAN 3	
3.1	HODNIK kor.pl =4,00m <sup>2</sup>
3.2	DN. BORAVAK podst =18,80m <sup>2</sup>
3.3	KUHINJA I BLAG. kor.pl =10,17m <sup>2</sup>
3.4	SOBA podst =13,70m <sup>2</sup>
3.5	KUPAONICA kor.pl =4,47m <sup>2</sup>
3.6	LOGGIA kor.pl =5,46(70%)=4,00m <sup>2</sup>
S3	UKUPNO=55,37m <sup>2</sup>

PRIPADCI:  
 - Ostava 014 u podrumu 2,75m<sup>2</sup>  
 - Garaža ili garažno mjesto u podrumu (po izboru)

TLOCRT 1. KATA



SJEVEROISTOČNO PROČELJE

