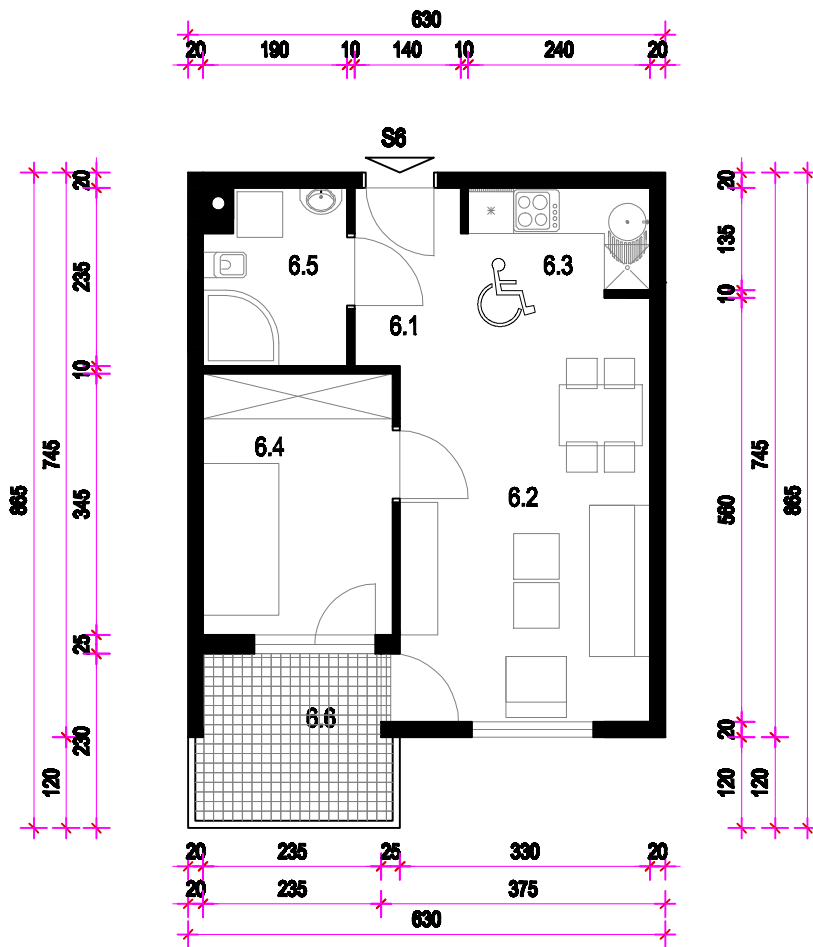
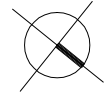


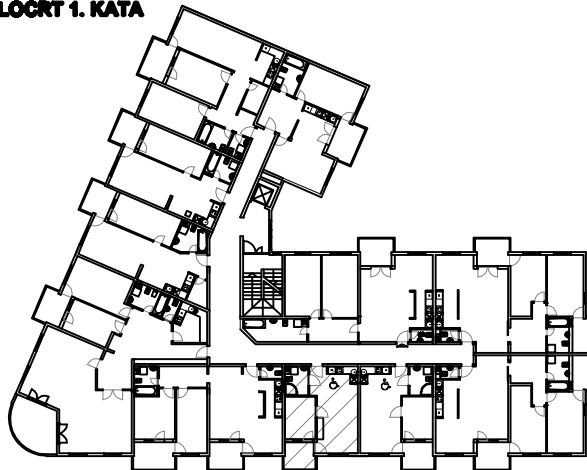
STAN 6. - 1. KAT MJ 1:100



STAN 6	
6.1	HODNIK ker.pl. =3,46m ²
6.2	DN. BORAVAK I BLAG. parket =17,44m ²
6.3	KUHINJA ker.pl. =3,24m ²
6.4	SOBA parket =8,63m ²
6.5	KUPAONICA ker.pl. =4,23m ²
6.6	LOGGIA ker.pl. =5,45(75%)=4,09m ²
S6	UKUPNO=41,09 m ²

PRIPADCI:
 - Ostava 01 u podrumu 2,85m²
 - Parkiralište P15 u dvorištu 16,50m²

TLOCRT 1. KATA



SJEVEROZAPADNO PROČELJE

