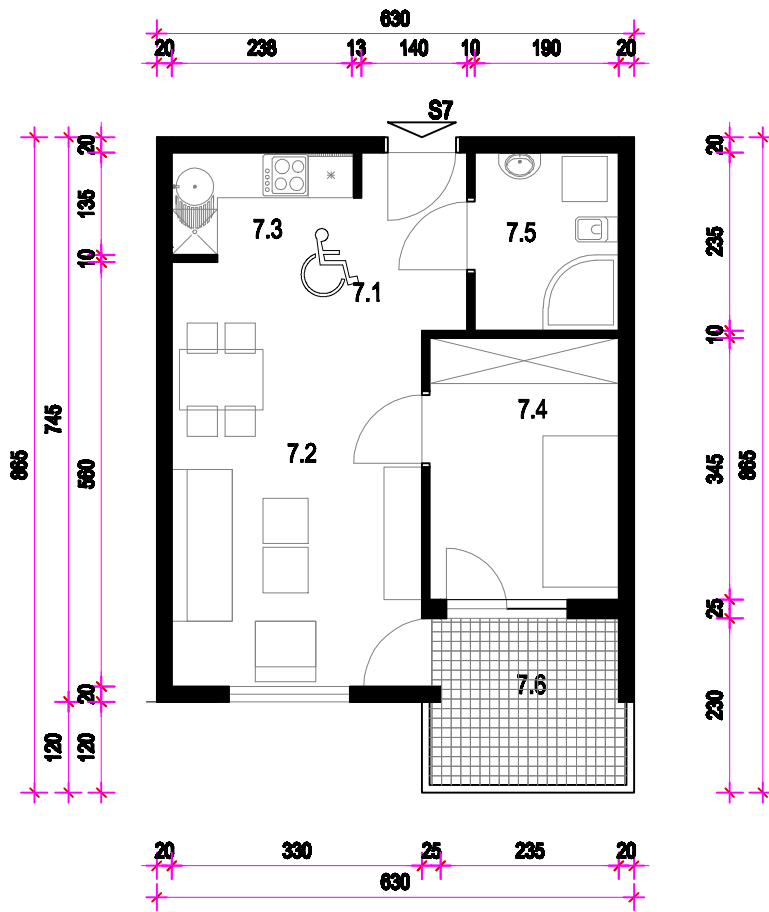
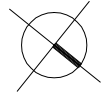


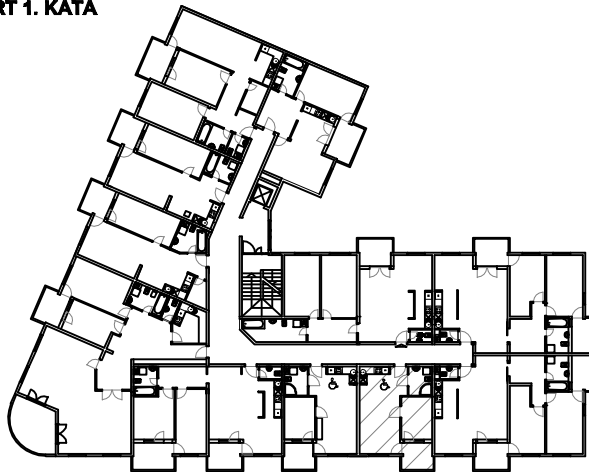
# STAN 7. - 1. KAT MJ 1:100



STAN 7	
7.1	HODNIK ker.pl. =3,46m <sup>2</sup>
7.2	DN. BORAVAK I BLAG. parket =17,80m <sup>2</sup>
7.3	KUHINJA ker.pl. =3,24m <sup>2</sup>
7.4	SOBA parket =8,63m <sup>2</sup>
7.5	KUPAONICA ker.pl. =4,47m <sup>2</sup>
7.6	LOGGIA ker.pl. =5,45(75%=4,09)m <sup>2</sup>
S7	UKUPNO =41,09m <sup>2</sup>

PRIPADCI:  
 - Oostava 02 u podrumu 2,75m<sup>2</sup>  
 - Parkiralište P27 u dvorištu 12,10m<sup>2</sup>

## TLOCRT 1. KATA



## SJEVEROZAPADNO PROČELJE

